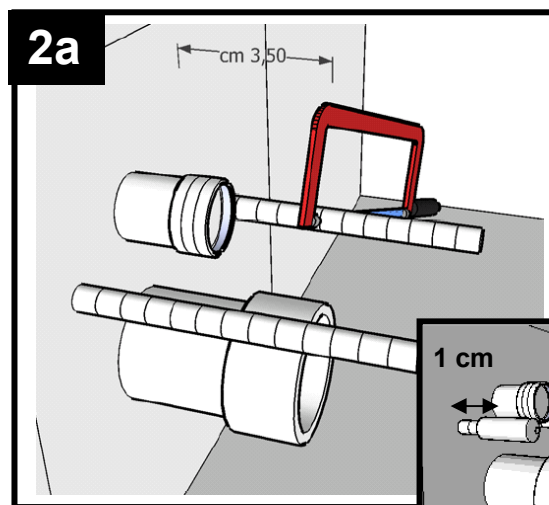


1 Predisporre gli scarichi ed i perni delle staffe secondo le quote riportate nelle schede tecniche
Prepare the draining and the fixing according to the dimensions of the technical scheme.

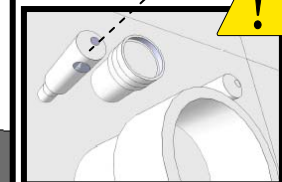
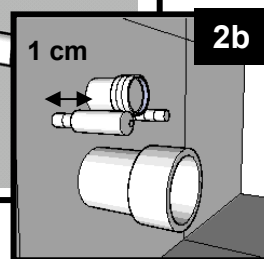


2a

2a Tagliare i perni filettati secondo la misura (3,5 cm) riportata nell'illustrazione.
Cut the pivots according to the distance (3,5 cm) in the picture.

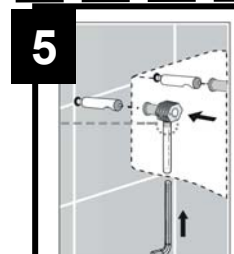
2b Avvitare i due cilindri in acciaio fino a lasciare 1 cm dalla parete.
Screw the two steel cylinders leaving 1 cm from the wall.

ATTENZIONE: le due svasature coniche devono essere rivolte verso il basso.
ATTENTION: the two conic countersink towards the bottom as in the picture.



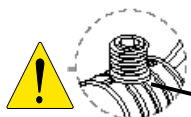
4

4 Inserire il sanitario nei perni e spingerlo fino alla parete, controllando che tutti i raccordi siano ben installati.
Put the wc on the pivots and push it to the wall, checking that the connections are well installed.



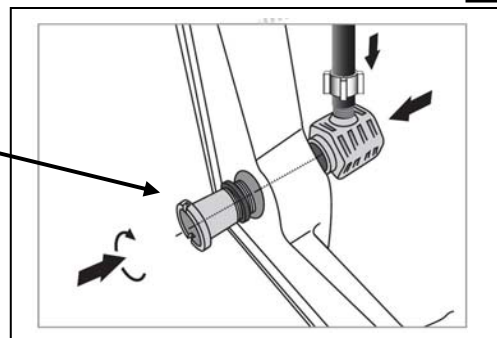
5

5 Stringere (in senso antiorario) con la chiave in dotazione il grano verificando che il sanitario sia ben accostato alla parete.
Tighten the screw by means of the key supplied in the kit make sure and keep the wc close to the wall.



3

ATTENZIONE: Il grano di serraggio deve stare fuori come nel particolare ingrandito.
ATTENTION: The tighten screw must be completely outside as in the picture.



3 Inserire i due fissaggi nel sanitario.
Put the fixing on the wc.